



# THSCA Super Elite Team Overview



The THSCA Super Elite Teams consists of high school players nominated by members of the Texas High School Coaches Association. The player must meet the THSCA award criteria to be nominated. The award recognizes student athletes across the state of Texas for their exemplary athletic achievement in their respective sport.

Each nomination will go to the S.E.T. (Super Elite Team) Committee to determine the finalists who have made the Super Elite team in each classification. Final selection of each Super Elite Team will be done by the Advisory Committee from the recommendations of the SET Committees.

## CRITERIA:

1. Be of good moral character
2. Varsity sports only.
3. Have been a member of the team in good standing at the time of nomination
4. Player has excelled as an elite member in their respective sport

## SUPER ELITE TEAMS BY THE NUMBERS:

- There will be **101 Super Elite Teams** covering all 23 sports throughout the state.
- There will be over **1,600 student-athletes** recognized on the Super Elite Teams
- Super Elite Teams will be recognized from October through June each year!
- We will have **808 Coaches** (SET Committees) that will select the Super Elite Teams

## AWARD RECOGNITION

- SET Committee Member - Certificate (808 total; 101 per region)
- Super Elite Team Selections – 101 total Teams recognized; 1,600 plus student-athletes recognized with a certificate and a Super Elite Team Patch.

# Super Elite Team Nomination Process:



## 1. Nominations

- Nominations open through the Member Portal after District Certification for team sports and after Regionals for individual sports
- Nominations will close the week prior to the state championship for team sports and a week after state championships for individual sports



## 2. THSCA Sorts Nominations

- THSCA office compiles, sorts, and sends out nominations to sport specific **SET Committee** and **Sport Advisory Committee** by Region.



## 3. SET Committee Ranks Athletes

- The **SET Committee** for each respective sport will have two weeks to evaluate players. The **SET Committee** member will rank athletes in their region and classification and fill out the spreadsheet provided by THSCA.



## 4. SET Committee Meets by Classification

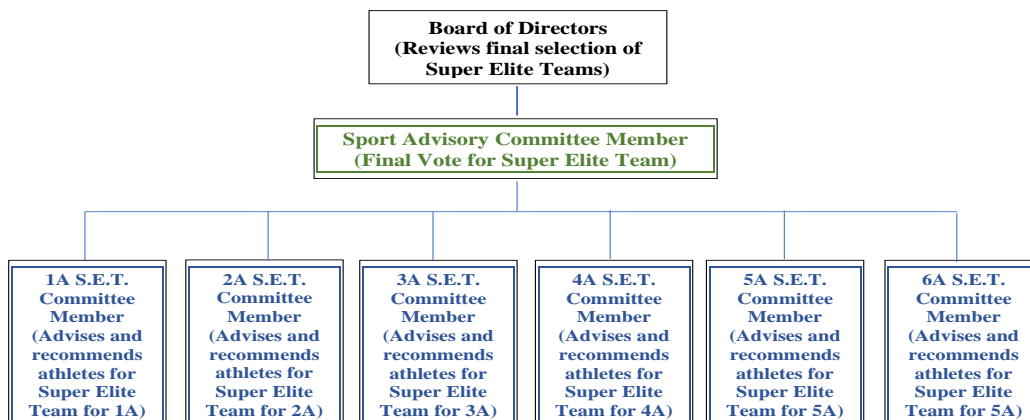
- **SET Committee** will meet (Zoom) with other members in their classification to determine their recommendation for Super Elite Team for their classification. EXAMPLE: All 6A **SET Committee** members (8 total) will use their regional rankings to help streamline the conversation that will determine the recommendation to **Advisory Committee Members** for the final 6A Super Elite Team.



## 5. Advisory Members Select Final Team

- Final meeting (Zoom) will take place with the THSCA, **SET Committee**, and **Sport Advisory Committee** members of all 8 Regions to determine each classification's Super Elite Team. **Sport Advisory Committee Members** will run the meeting finalizing each classification's Super Elite Team.

### Super Elite Teams Regional Responsibilities



## SET Committee Overview:



- ✓ Senior Director from each region will oversee ALL SET committee selections
- ✓ The Advisory Committee Member from each region will be responsible for delivering finalized SET Committee list to THSCA.
- ✓ The Advisory Committee member will be responsible for SET Committee communication and progress in their respective region/sport.
- ✓ You do NOT have to be a head coach to serve on the committee (must be THSCA member).
- ✓ SET Committee members will serve annually and must sit out at least two terms before being able to serve again.
- ✓ The SET Committee shall communicate frequently in SportsYou.
- ✓ NOTE: There will be 101 coaches serving in each region's set committees. Each Sport SET Committee will have one coach per classification for each classification that competes in that sport. There will be 23 SET Committees per THSCA Region (see chart below).
- ✓ SET Committees (in each region) will evaluate and rank their nominations, then all regions will meet via ZOOM to determine the Super Elite Team for each classification.

## SET Committee Selection Details:

- ✓ Chairman of the SET Committee for each sport is responsible for setting meeting times and leading the SET Committee meetings.
  - The advisory chair will appoint the SET Committee Members as the "Chair" for 2023-24
  - The chair shall communicate with all SET Members through SportsYou throughout the process of the selections.
  - The chair is responsible for compiling Super Elite Team Spreadsheets and sending to the Advisory Committees and THSCA the day after rankings are due (See Timeline).
- ✓ The SET Committee for each sport will meet with all other THSCA Regions "by CLASSIFICATION" prior to the final selection meeting with the Advisory members.
  - The SET Committee "in each classification" shall determine what they believe is the Super Elite Team for their Classification/Sport prior to the final meeting with the Advisory Committee (See Timeline).
    - The Super Elite Team Spreadsheet shall be sent to the Advisory Committee and THSCA immediately following the meeting.
    - NOTE: The goal of the Set Committee "by classification" is to bring the Advisory Committee as close to a final product as possible for the Super Elite Team in their classification. Should the SET Committee have a position or positions that they cannot agree on, then they should bring those nominations to the Advisory Committee to determine the final decision.

## **SET COMMITTEE BREAKDOWN**

|    | <b>Activity</b>       | <b>Classification(s)</b> | <b>Total #'s</b> |
|----|-----------------------|--------------------------|------------------|
| 1  | Baseball              | 1A-6A                    | 6                |
| 2  | Basketball (Boys)     | 1A-6A                    | 6                |
| 3  | Basketball (Girls)    | 1A-6A                    | 6                |
| 4  | Cross Country (Boys)  | 1A-6A                    | 6                |
| 5  | Cross Country (Girls) | 1A-6A                    | 6                |
| 6  | Football              | 2A-6A                    | 5                |
| 7  | Golf (Boys)           | 1A-6A                    | 6                |
| 8  | Golf (Girls)          | 1A-6A                    | 6                |
| 9  | Water Polo (Boys)     | 6A                       | 1                |
| 10 | Water Polo (Girls)    | 6A                       | 1                |
| 11 | Soccer (Boys)         | 4A-6A                    | 3                |
| 12 | Soccer (Girls)        | 4A-6A                    | 3                |
| 13 | Softball              | 1A-6A                    | 6                |
| 14 | Swim & Dive (Boys)    | 4A-6A                    | 3                |
| 15 | Swim & Dive (Girls)   | 4A-6A                    | 3                |
| 16 | Team Tennis           | 4A-6A                    | 3                |
| 17 | Tennis (Boys)         | 1A-6A                    | 6                |
| 18 | Tennis (Girls)        | 1A-6A                    | 6                |
| 19 | Track & Field (Boys)  | 1A-6A                    | 6                |
| 20 | Track & Field (Girls) | 1A-6A                    | 6                |
| 21 | Volleyball            | 1A-6A                    | 6                |
| 22 | Wrestling (Boys)      | 5A-6A                    | 2                |
| 23 | Wrestling (Girls)     | 5A-6A                    | 2                |

**104 (per region)**

# SUPER ELITE COMMITTEE TIMELINE:

| SPORT:           | NOMINATIONS OPEN: | NOMINATIONS CLOSE: | SET COMMITTEE DEADLINE:<br>(FINAL ROSTERS DUE) | ADVISORY FINAL ZOOM: |
|------------------|-------------------|--------------------|--|----------------------|
| Team Tennis      | Oct. 18           | Nov. 2             | Nov. 14  | Nov. 16              |
| Water Polo*      | Oct. 18           | Nov. 2             | Nov. 14  | Nov. 16              |
| Cross Country*   | Oct. 25           | Nov. 9             | Nov. 28  | Nov. 30              |
| Volleyball       | Nov. 6            | Nov. 30            | Dec. 11  | Dec. 13              |
| Football         | Dec. 4            | Jan. 11            | Jan. 28  | Jan. 31              |
| Wrestling*       | Feb. 12           | Feb. 29            | Mar. 4   | Mar. 6               |
| Swim/Dive*       | Feb. 12           | Feb. 29            | Mar. 4   | Mar. 6               |
| Girls Basketball | Feb. 19           | Mar. 7             | Mar. 25  | Mar. 27              |
| Boys Basketball  | Feb. 26           | Mar. 14            | Mar. 25  | Mar. 27              |
| Soccer*          | Apr. 1            | Apr. 18            | Apr. 29  | May 1                |
| Golf*            | Apr. 11           | May 10             | May 20   | May 22               |
| T&F*             | Apr. 22           | May 9              | May 20   | May 22               |
| Tennis*          | May 6             | May 21             | May 28   | May 30               |
| Softball         | May 1             | Jun. 6             | Jun. 13  | Jun. 13              |
| Baseball         | May 8             | Jun. 13            | Jun. 18  | Jun. 20              |

\*Boys & Girls will meet on the same day but will have separate Teams meetings.

\*\*Volleyball release date on Dec. 19<sup>th</sup>



# SET Committee/Advisory Committee **CHECKLIST:**



- Nominations are sent from THSCA Office to both the SET Committee and Advisory Committee for the SET Committee to begin their Rankings for their Region and Classification. (See Timeline)
  
- Regional SET Committee Rankings DUE. (See Timeline) NOTE: Each SET Committee member will essentially make their own Super Elite Team from the nominations they received in their region and in their classification (use the spreadsheet THSCA provides).
  
- SET Committee Members shall meet by Classification with all 8 THSCA Regions to determine the Super Elite Team for their classification. These meetings (ZOOM) shall be scheduled and communicated by the Chair of the SET Committee. The advisory chair will appoint SET Committee Members as the the Chair for the 2023-24 school year. This meeting **MUST** take place prior to the final Zoom meeting with the Advisory Committee, and after the due date for the SET Committee Rankings. Each SET Committee member should use their previously formulated rankings spreadsheet from their region for the meeting. When finalizing the Super Elite Team, if there are decisions that cannot be agreed upon, those decisions should be carried over to the Final Selection Meeting for the Advisory Committee to vote on. The Chair shall immediately share the Super Elite Team Spreadsheet with the THSCA and Advisory Committee following the meeting.
  
- Attend the final Advisory Committee Selection “ZOOM” Meeting (SET Committee Members and Advisory Committee Members) set up by the THSCA.

## **\*IMPORTANT:**

- **Super Elite Teams will not be FINAL until the THSCA Office has had time to review each selection following the Selection Meeting to ensure that all selections are eligible per THSCA guidelines. THSCA will communicate the Final Super Elite Teams to the Advisory Committee and the SET Committee prior to releasing to the public.**
- **We will promote the SET Committee and Advisory Committee members following the release of the Super Elite Team for each specific sport. We want to keep the members of the SET Committee anonymous until that point.**